

EMPOWERING



SOLAR EFFICIENCY



# SUNJOULE™

Light Through Type of BIPV, which can generate Electricity

"SUNJOULE™" is glass/glass laminated module which appropriate clearance between the cells provides a shading effect to control the sunlight to a comfortable level.

Tentatively called "SUNJOULE™-Fx2" has cells faced on both sides. It can generate higher electric power even modules are placed vertically. It is perfect for using as fences and glass screens and provides stylish looks more than ever.

## PRODUCT DESCRIPTION

Feature

Light Through Type of BIPV, which can generate Electricity.

Applications

Windows Glass for Building, Glass Façade for Building, Glass Fence, Glass Louver and Top-Light etc.

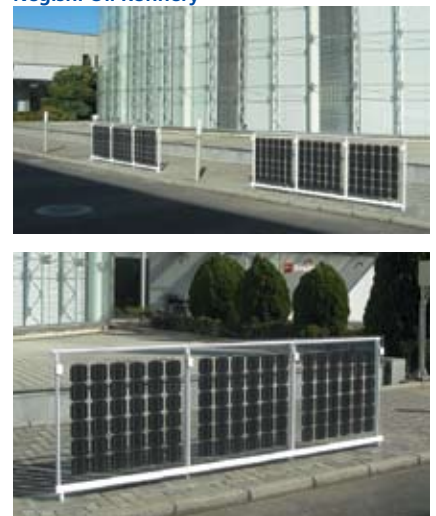
HULIC Hachioji Bldg



KITAMI SHINKIN BANK, Head Office



JX Nippon Oil & Energy Corporation, Negishi Oil Refinery



Provided by JX Nippon Oil & Energy Corporation

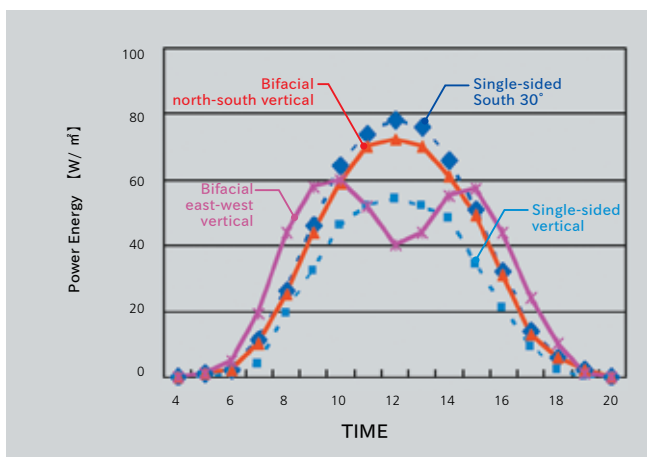
AGC GLASS KENZAI CO.,LTD.

4-24-11,Higashiueno Taitou-ku, Tokyo 110-0015 JAPAN <http://www.agc-gk.com>

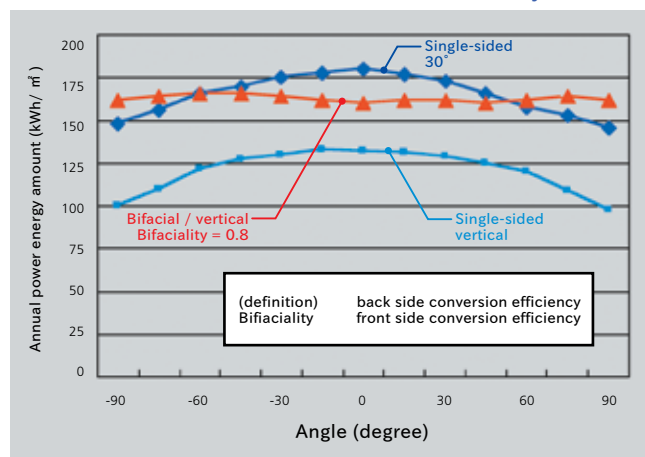
[Contact] <http://www.glass-system.jp/product/product5.htm>

# Data Sheet (Calculated Value)

Provided by Hitachi, Ltd.



Daily average of the power output distribution with the bifacial east-west vertical installation (calculated value)



Angle with the bifacial vertical installation (calculated value)

Reference : Nihon University Funabashi Campus



Reference : Tsuzuki Post Office



Reference : Keio University Hiyoshi Campus



Reference : Seitoku University (Matsudo City)

